

# THE CONSERVATION FUND

## PELICAN RIVER FOREST



### FAST FACTS:

**Partner:** Wisconsin Department of Natural Resources

**Size:** 69,000 +/- acres

**Location:** Oneida, Forest and Langlade Counties, Wisconsin

### PROJECT OVERVIEW:

The 69,000 +/- acre Pelican River Forest is the largest block of privately owned unprotected forest remaining in Wisconsin. The Conservation Fund (TCF) has secured an agreement to purchase the property. The acquisition will provide time for the development and implementation of permanent conservation and public access easements on the forest held by the Wisconsin Department of Natural Resources (DNR) that will secure public access and sustainable forest management on the land. The purchase and ultimate protection of this working forest in partnership with the DNR will support northern Wisconsin's long tradition of timber production and outdoor recreation, strengthen rural economies, help protect water quality in two major watersheds, and maintain critical habitat for fish and wildlife.

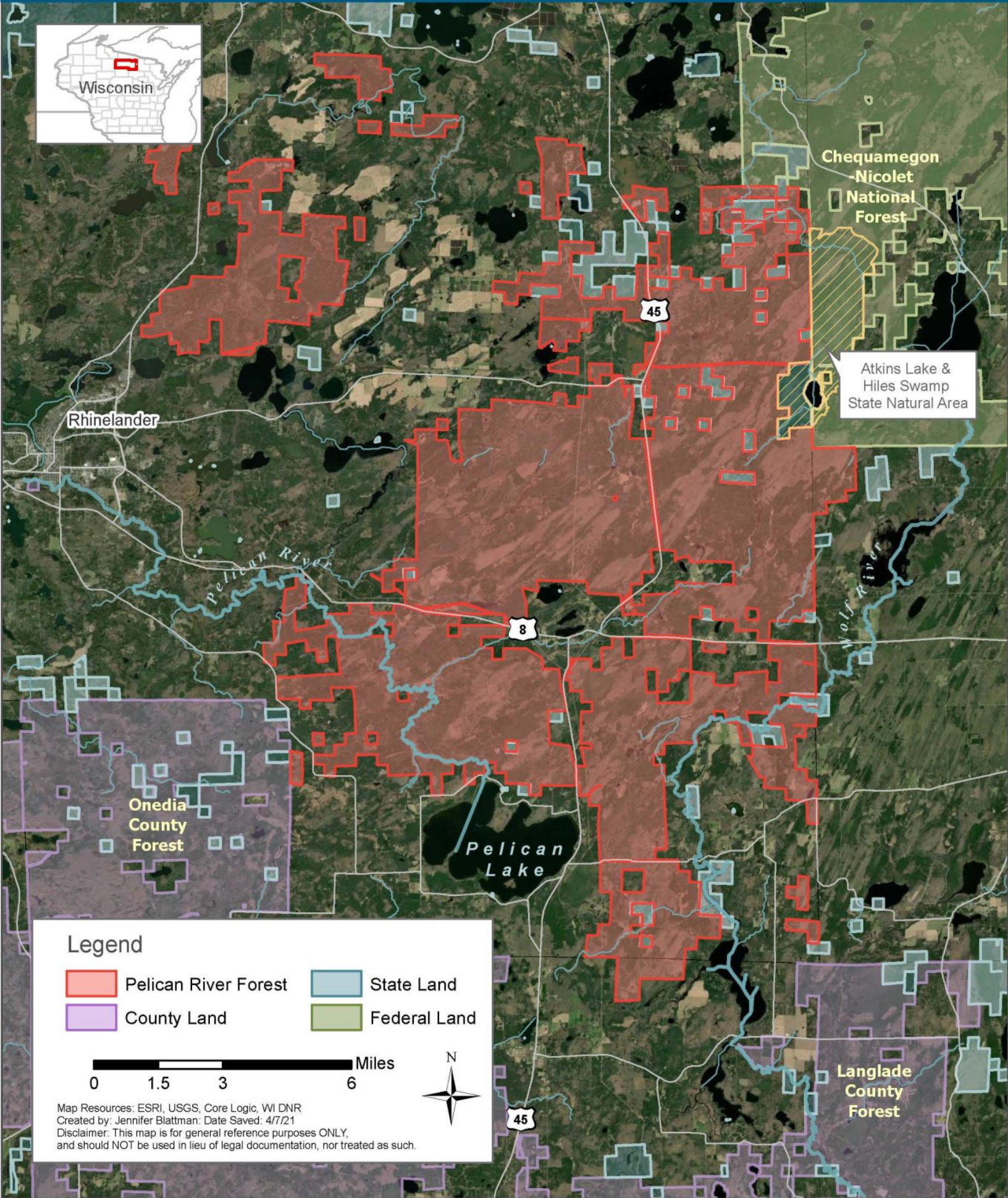
After the land is acquired, conservation and public access easements will be conveyed to the DNR in several phases. DNR intends on using state-dedicated Knowles-Nelson Stewardship Funds along with federal Forest Legacy Program funds to acquire the permanent easements. A separate Road Maintenance Endowment will be established by TCF with a local community foundation to provide annual income for upkeep of the interior roads which will be opened to the public. And finally, once the forest land has been protected under conservation easements TCF will look to sell the encumbered land to private entities ensuring the land stays on the property tax rolls.

### CONTACT:

Clint Miller  
Central Midwest Regional Director  
The Conservation Fund  
[cmiller@conservationfund.org](mailto:cmiller@conservationfund.org)

# Pelican River Forest Project

THE CONSERVATION FUND



## Legend

- Pelican River Forest
- State Land
- County Land
- Federal Land

0 1.5 3 6 Miles



Map Resources: ESRI, USGS, Core Logic, WI DNR  
Created by: Jennifer Blattman: Date Saved: 4/7/21  
Disclaimer: This map is for general reference purposes ONLY,  
and should NOT be used in lieu of legal documentation, nor treated as such.